

RUBELLA VIRUS ANTIGEN



Rubella (German Measles) Virus Antigen is medically significant because of its teratogenic effect when contracted by childbearing women. Maternal infection, especially during the first trimester of pregnancy, can result in a range of congenital birth defects including deafness, cataracts, diabetes and cardiac and bone abnormalities. The characteristic multisystem defects resulting from a Rubella prenatal infection are termed the Congenital Rubella Syndrome (CRS).

PRODUCT #	DESCRIPTION	BUFFER	PROTEIN CONCENTRATION	STORAGE	PACKAGING
6076	Grade IV Viral Strain: HPV77 Propagated in VeroCells UV Inactivated	Tris/EDTA Sucrose Buffer pH 8.0 - 8.5	0.5mg/mL (~ 90% Viral Protein)	-65°C or Below	0.5, 1, 5, 10, & 50mg Aliquots HDPE Plastic Bottles Shipped on Dry Ice
6123	Grade IV - PBS *As Above	PBS - Sucrose pH 7.3 - 7.7	0.5mg/mL (~ 90% Viral Protein)		
6075	Grade III *As Above	Tris/EDTA pH 8.0 - 8.5	0.1 - 0.2mg/mL (~ 60% Viral Protein)		
6119	Grade I	Culture Fluid	0.1 - 0.2mg/mL (< 10% Viral Protein)		

Serologic tests are an important aid in the prevention of prenatal Rubella infections. The incidence of this disease has decreased dramatically in the United States following the nationwide Rubella testing and immunization program.

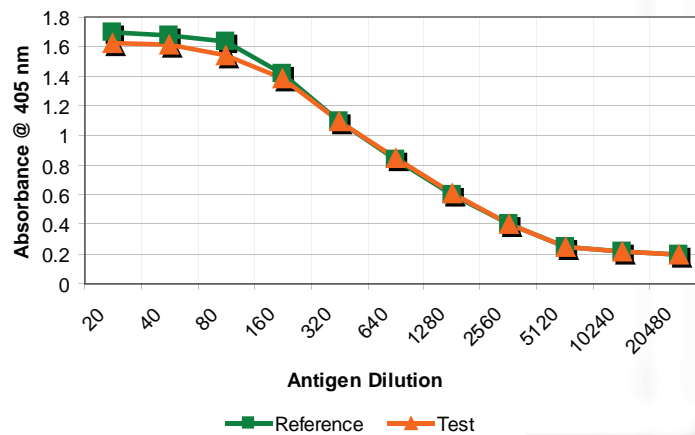
Rubella Virus Antigen is prepared by the concentration of cell culture fluid from cells infected with Rubella Virus strain HPV77. The Rubella virus is purified by gradient centrifugation and yields an antigen high in sensitivity with low backgrounds in the ELISA and other solid phase immunoassays. The Rubella Grade IV Product #6076 and #6123 are >90% pure and are typically required for IgM antibody testing. All of the Rubella products are inactivated and are tested for infectivity prior to release.

RUBELLA VIRUS ANTIGEN

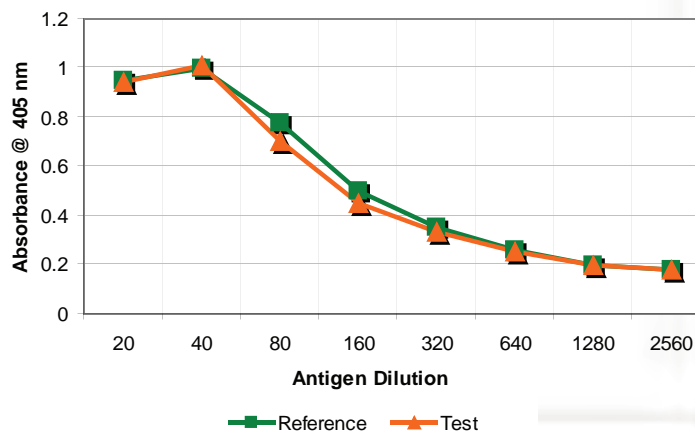


Rubella, commonly known as German Measles, is a RNA virus belonging to the Togaviridae virus family.

**Rubella Antigen Grade IV (#6076) ELISA Titration
Human IgG Antibody**



**Rubella Antigen Grade III (#6075) ELISA Titration
Human IgG Antibody**



VA-RV 06/09/09

For more information contact:
5171 Wilfong Road • Memphis, TN USA 38134
888.530.0140 • 207.283.6500
Fax: 207.283.4800
E-mail: info@meridianlifescience.com

ISO 9001:2008 Certified and EC 1774/2002 Approved Facility

www.MERIDIANLIFESCIENCE.COM

